

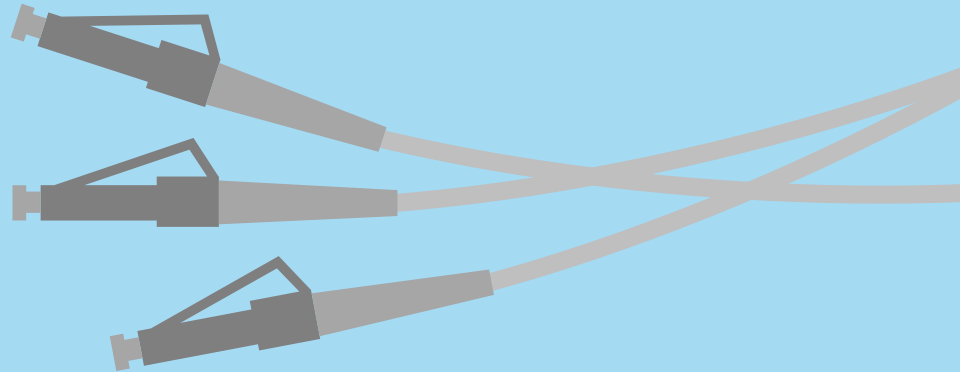
# Agile Solution for Data Center Lynx2-customfit™ Connector

**SUMITOMO ELECTRIC INDUSTRIES, LTD.**



# Problems at the Data Center

Conventional Pigtail Solutions present issues at every step of the installation.



# Problems at the Data Center



## On-Site

- Difficult cable installation
- Handling of excess length
- Rack space
- Urgent maintenance

## Management

- Time consuming pre-survey
- Ordering process
- Delivery lead time
- Stock management



# Solutions at the Data Center

Custom solutions which prove massive efficiencies across stock management, cabling, maintenance, and manufacturing.





# Solutions at the Data Center



## On-Site

- Plug head less Cable laying
- Just Length
- Rack space saving
- Quick recovery

## Management

- No Pre-survey
- No Patch cord Design
- Time saving
- Simple stock management



# **First, It Starts With Smooth Cable Installation**



# No Pre-Survey and Cabling Design

## Conventional Pigtail Cabling

Troublesome order procedure  
or you have to have many SKU in stock



### 6.Installation



## Lynx-customfit™ Solution

Just prepare Lynx connectors and bulk  
cables, and immediately start!



### 1.Installation

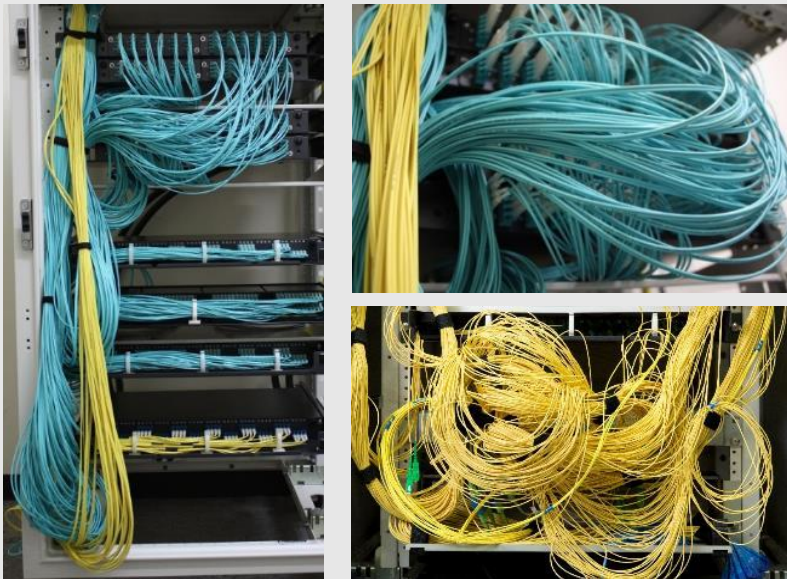


# Slackless Cable Management

## Conventional Plug & Play Solution



Chaotic routing due to use of fixed length pre-terminated cords



## Lynx2-customfit® Solution



Slackless cable management with Lynx connectors





# Rack Space Saving (Depth)

## Conventional Pigtail Solution

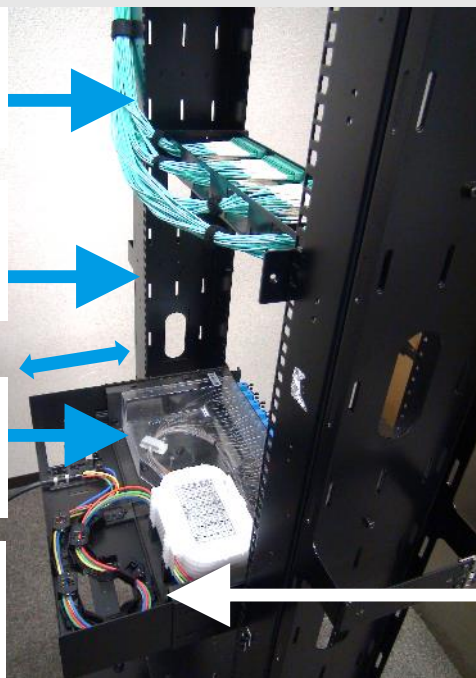
Conventional tray with splice tray

Lynx does not need splicing tray so the panel can be smaller

This much shortened

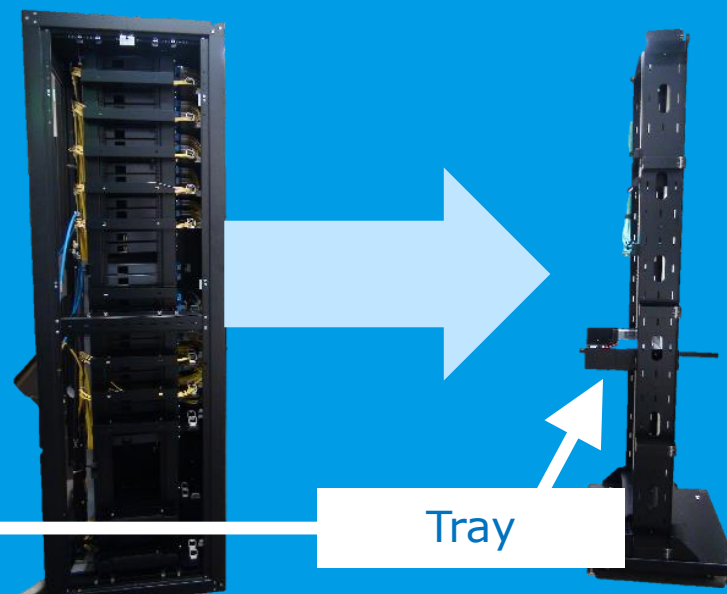
This is panel for conventional pigtail solution

It needs space for splicing tray



## Lynx2-customfit® Solution

Shallow panel without splicing tray applicable



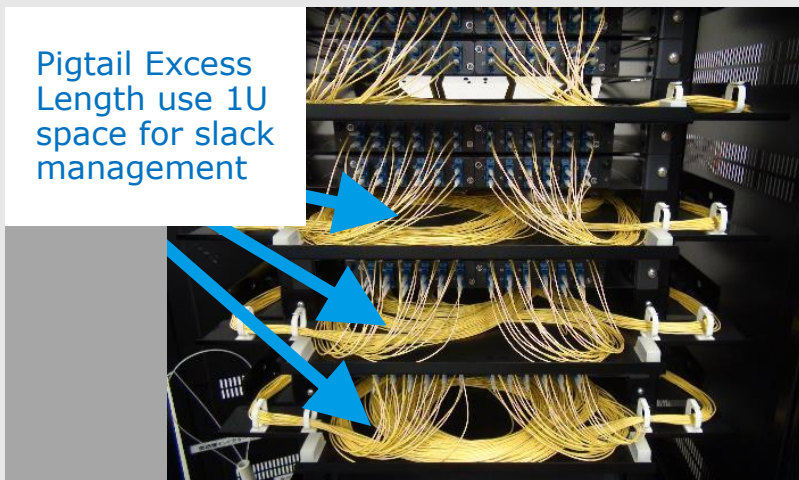
# Rack Space Saving (Vertical)

## Conventional Pigtail Solution

Conventional tray with splice tray



Pigtail Excess Length use 1U space for slack management

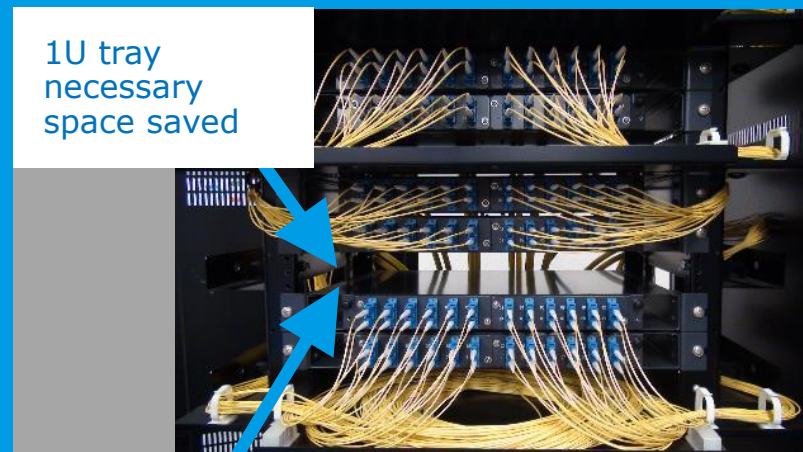


## Lynx2-customfit® Solution

Shallow panel without splicing tray applicable



1U tray necessary space saved

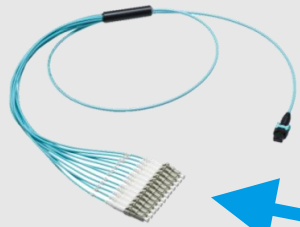


We can place 1 more patching panel in this case

# Urgent Maintenance (In Case of No Inventory)

Confidential

## Conventional Plug & Play Cabling



If only one connector end is dysfunction,  
you have to replace all of the cable.



Diagnose



Order



Deliver

Only One is **NG**

### Replace all



## Lynx-customfit™ Solution



Just prepare Lynx  
connectors and replace  
only one connector  
immediately!



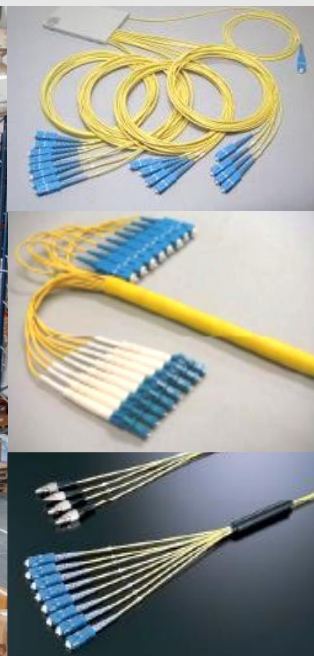
### Quick Recovery



# Stock Management

## Conventional Pigtail Cabling

- Need to have various kinds of SKU
- Occupy stock yard



## Lynx2-customfit™ Solution

- Just stock Lynx connectors and bulk cables
- Less stock space required



100pcs of connectors can be stored in one cardboard box



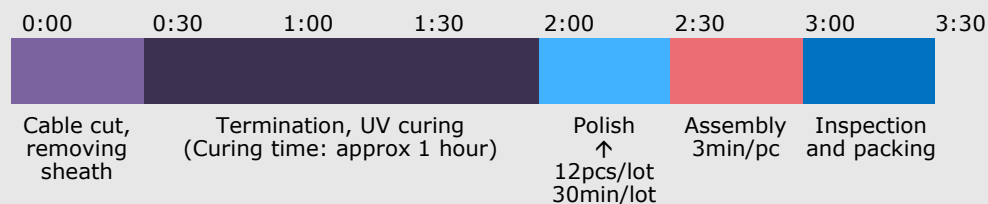
# Manufacturing

## Conventional Method



- Longer production lead time
- Skilled operators are required
- Consumables are expensive

### 72c Trunk Cable, 12 x MPO/Cable

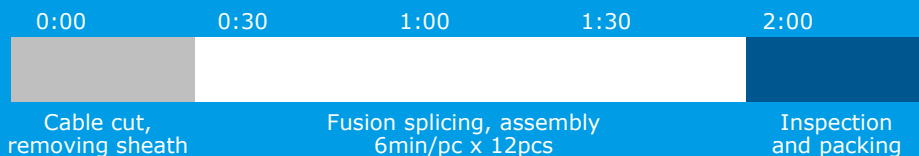


## Lynx-customfit™ Solution





- Shorter production lead time
- Lower initial investment
- Skilled operators not required

### 72c Trunk Cable, 12 x MPO/Cable



# Summary: Lynx Customfit™ Solves Your Problems

Confidential

Problems at Data Center:	Conventional 	Lynx 
Difficult Cable Installation	✗	✓
Handling of Excess Length	✗	✓
Rack Space	✗	✓
Urgent Maintenance	✗	✓
Time Consuming pre-survey	✗	✓
Ordering Process	✗	✓
Delivery Lead time	✗	✓
Stock Management	✗	✓

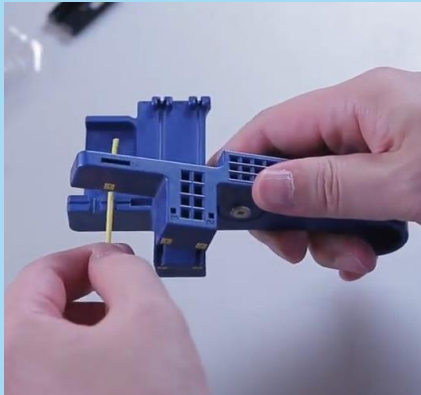


# Lynx2 Customfit™ Field Assembly Splice-on-connector

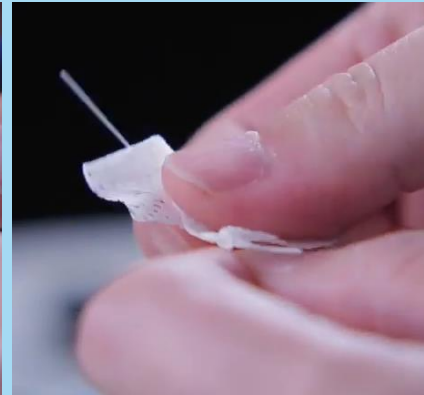
Confidential

## STEP 1

## Cord Preprocessing



Remove and slit the cord sheath using the Lynx strip & slit tool.



Remove the buffer and cleave the fiber.

# Lynx2 Customfit™ Field Assembly Splice-on-connector

Confidential

## STEP 2

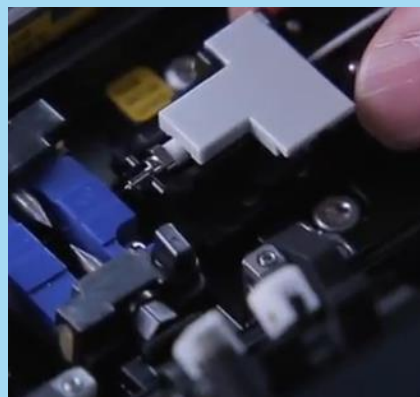
## Fusion Splicing



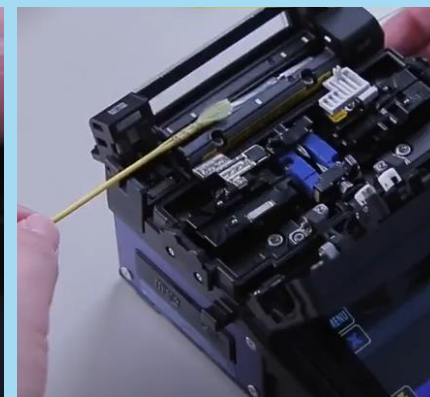
Set the fiber holder with the cord on the left side.



Set the ferrule into the holder and place it on the right side.



Close the wind hood and start the splice.



Move the spliced assembly into the oven and start heating.



# Lynx2 Customfit™ Field Assembly Splice-on-connector

Confidential

## STEP 3

## Assembly



After the heating, remove the connector from the oven.




While rotating the rear housing, grip the Kevlar® strands.




Remove the dust cap.



Finished and ready to use.



# A New Cabling Experience at your Datacenter



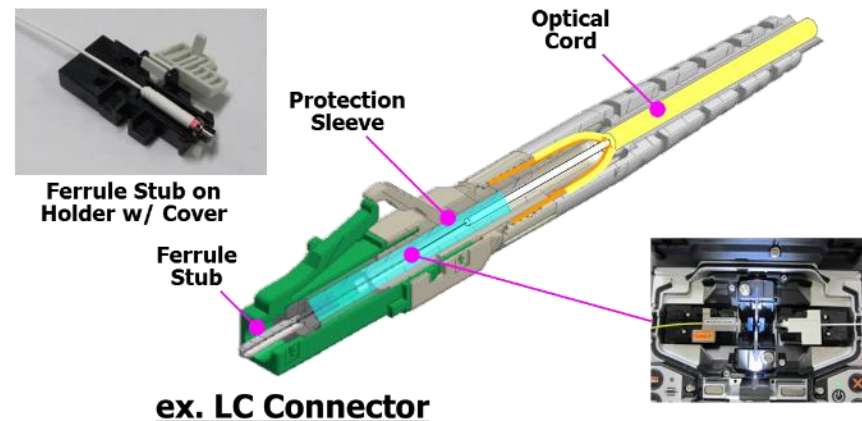
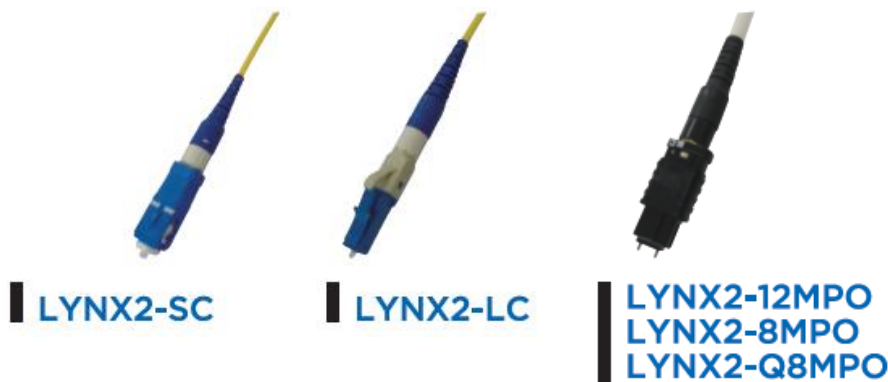
# Reference

# Lynx2 Customfit™

## Field assembly splice-on-connector

Confidential

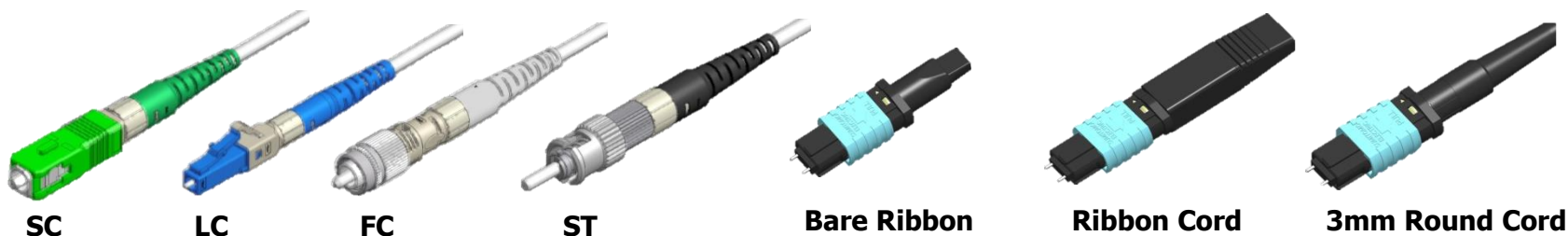
Adapting splicing technology, Lynx provide highly reliable optical connector on site. Optimize the cable length as exact length, Lynx solves cable snarl, slack in the floor, trays, and racks, moreover improves air-conditioning efficiency.





# Lineup and Specification

## Full Line up for all needs



### Applicable fusion splicer

Single Fibre	TYPE-71C/71C+	TYPE-71M12	TYPE-201x/201ex	T-55
Single Fibre Cord	TYPE-71C/71C+	TYPE-71M12	TYPE-201x/201ex	T-55
MPO	TYPE-71M12			

- Can apply for the place required low return loss as analog transmission, etc.
- Can apply for wide temperature range.

	Lynx2-SC	Lynx2-LC	Lynx2-FCM	Lynx2-ST	Lynx2-MPO
Standard	IEC61754-4	IEC61754-20	IEC61754-13	IEC 61754-2	IEC61754-7
Insertion Loss (against master plug)	SMF: Ave. 0.2dB, Max. 0.3dB MMF: Ave. 0.1dB, Max. 0.25dB				SMF,MMF Low Loss (LL) Max. 0.4dB SMF Standard Loss Max. 0.75dB
Return Loss (against master plug)	SMF: $\geq 60$ dB (APC), $\geq 55$ dB (UPC) MMF: $\geq 30$ dB (PC)				